

Real-Time In-Transit Data Loggers

FlashLink Real-Time In-Transit Loggers are reliable, single use real-time devices for monitoring and recording temperature, location, humidity, light and shock during transport of perishable goods. Data is sent via global cellular network to FlashTrak cloud service for tracking route information by plotting location using Google Maps. FlashTrak also shows conditions within a shipping container, truck, or rail car, and the light sensor detects door openings to indicate inspections, arrival, unloading or possible load tampering.

Trip information is always available, even before a shipment arrives at the final destination. Access to data is quick and easy from a user-friendly dashboard in FlashTrak web application or from the free FlashTrak Connect mobile application on any Android or iOS device. Maritime Service provides vessel location while a container is on the ocean, and FlashTrak View enables receivers and partners to look up trip data from any internet-enabled device.

Data is always guaranteed with continuous onboard logging, and PDF trip reports can be downloaded directly to a PC via USB port as a back-up to the web application when there's no cellular service available.

FlashLink. NOW AIR 4G/5G Real-Time In-Transit Logger

Models are ideal for air cargo transport and contain non-lithium batteries and feature an air pressure sensor that activates Flight Mode. 4G/5G Global LTE CAT-1, 2G fallback. LCD confirms activation, displays battery life, current and min/max readings, alarm events, cellular connection signal strength

Models	
22493	15-day log duration, Non-Lithium, 5 min log interval, 15 min upload interval Domestic shipments, delivery routes: Temperature, humidity, light, shock, location, air pressure °C
22493-01	15-day log duration, Non-Lithium, 5 min log interval, 15 min upload interval Domestic shipments, delivery routes: Temperature, humidity, light, shock, location, air pressure °F



FlashLink. NOW 4G/5G Real-Time In-Transit Logger

4G/5G Global LTE CAT-1, 2G fallback. LCD confirms activation, displays battery life, current and min/max readings, alarm events, cellular connection signal strength

Models	
22390-04	12-day log duration, 5 min log interval, 15 min upload interval Domestic shipments, delivery routes: Temperature, light, location, °F
22390-05	70-day log duration, 10 min log interval, 90 min upload interval Long trips, including storage time: Temperature, light, location, °C
22392	120-day log duration, 10 min log interval, 120 min upload interval Long trips, including storage time: Temperature, humidity, light, shock, location, °C
22392-02	120-day log duration, 10 min log interval, 90 min upload interval Long trips, including storage time: Temperature, humidity, light, shock, location, °C with protective pouch
22393	70-day log duration, 10 min log interval, 90 min upload interval Long trips, including storage time: Temperature, humidity, light, shock, location, °C
22492	15-day log duration, Non-Lithium, 5 min log interval, 15 min upload interval Domestic shipments, delivery routes: Temperature, humidity, light, shock, location, °F



New 4G/5G with LCD

FlashLink. RTL Prime In-Transit Logger

2G Global Quad-band GSM (850, 900, 1800, 1900 MHz), GPRS data

Models	
22362	15-day duration, 5 min log interval, 15 min upload interval Domestic shipments & delivery routes: Temperature, light, location
22330	60-day duration, 10 min log interval, 90 min upload Export shipments: Temperature, light, location



FlashLink. RTL Prime 3G-2T In-Transit Logger

60-day log duration, 10 min log interval, 120 min upload interval
Ocean containers, trucks: Internal & external temperature, light, location

Model 22367

- 3G/2G worldwide coverage
- External sensor for supply air temperature
- Internal sensor for temperature in back of container
- 50ft/15m cable fits most standard containers
- Two temperatures plotted on one graph
- Easily compare both sets of data upon arrival
- Verify product was carried within correct temperature range
- Confirm reefer equipment performance and proper air flow front to back
- One trip report provides clear evidence for insurance claims



FlashLink. RTL Prime 3G Cryo In-Transit Logger

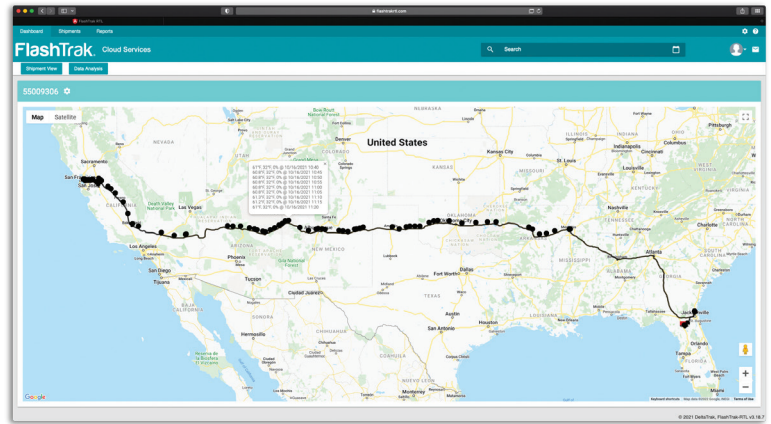
Model 22368

- 3G/2G worldwide coverage
- 60-Day logging duration
- Records temperature from -328°F (-200°C) to 212°F (100°C)
- Highly accurate external RTD sensor
- Ideal for ultra-low temperature shipments and temporary storage
- Sensors can be used for dry ice or liquid nitrogen shippers



FlashTrak. Cloud Service

- Web-based interface for monitoring and analyzing shipment data in real-time
- Visibility of location and condition inside containers and reefer trucks
- Maritime Service shows vessel location while container is on the ocean
- Notifications and alerts sent via text or email
- Provides essential data for making critical cold chain decisions



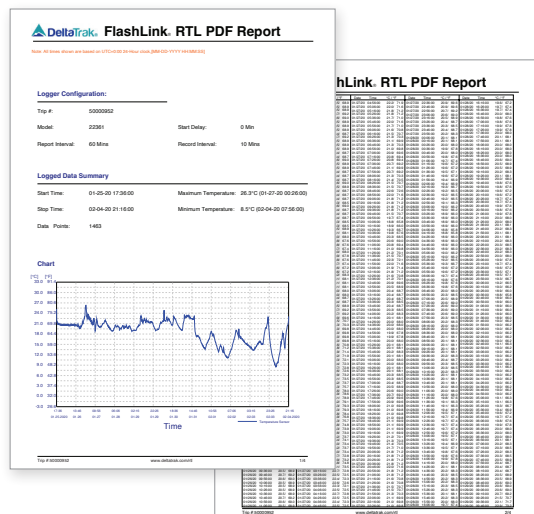
FlashTrak. Connect Mobile App

- View trip data in FlashTrak from Android and iOS mobile devices
- Check on shipments any time from anywhere
- Convenient on loading and receiving docks
- Real-time data allows you to take immediate corrective action while product is in transit



FlashLink. RTL PDF Reports

PDF report downloaded from
RTL Logger memory



PDF report downloaded from
FlashTrak RTL Web Application

